

FEATHERLITE ***INDUSTRIAL LADDERS***



ladder catalogue

safety information

DUTY RATINGS

Featherlite Ladders are stringently tested to meet or exceed where applicable to the requirements of the Canadian Standards Association (CSA), the American National Standards Institute (ANSI), and Occupational Safety & Health Administration (OSHA). The appropriate rating is achieved through an extensive series of tests required by the various standards.

It is important to note one major difference between CSA and ANSI. Currently, the maximum CSA rating is Grade 1 - 250 lb; however ANSI encompasses two additional ratings; Type 1A - 300 lb and Type 1AA - 375 lb. Several Featherlite product lines meet or exceed these additional ratings as noted throughout the catalogue.

Duty Rating	Rated Use	CSA Code	ANSI Code
200 lb.	Light Duty Household	Grade 3	Type III
225 lb	Medium Duty Commercial	Grade 2	Type II

Duty Rating	Rated Use	CSA Code	ANSI Code
250 lb.	Heavy Duty Industrial	Grade 1	Type I
300 lb.	Extra-Heavy Duty Industrial	Grade 1A	Type IA
375 lb.	Super-Heavy Duty Industrial	Grade 1AA	Type IAA

SAFETY TIPS

Featherlite manufactures quality products for long and safe use, but proper care must always be taken to ensure your safety. Even the best ladders can be involved in accidents through neglect or improper practices.

Selection

- Take into account all potential uses for the product you are going to purchase - make sure you have the necessary load rating and height for each job.
- Read the labels - Information is provided in detail for your safety and protection.
- When making your decision on which duty rating you require, ensure you allow for the combined weight of the user, clothing, tools and any other materials.
Never exceed the maximum load rating.

Warning:

Metal ladders conduct electricity - Do not use where contact may be made with live electrical circuits. **Failure to follow proper instructions could result in serious personal injury or death.**

Inspection

- Always inspect your ladder before each use.
- Inspect for loose fasteners, broken, bent or cracked rails, rungs and steps.
- Ensure moving parts are in good working order.
- Clean ladder of all foreign material. (oil, grease, ice etc.)
- Never use a damaged or worn ladder.
- Never use a ladder which has been exposed to excessive heat or chemical corrosion.

Before you climb...

- Do not use any ladder if you are in poor health, taking drugs, using alcohol, or physically handicapped.
- Check your footwear - Do not use leather or any smooth surfaced sole. Only use clean, dry, slip-resistant footwear.
- Do not use in high winds or storm conditions.
- Do not set up over or in doorways.

PROPER SET UP AND USE

Step Ladders

Make sure ladder is fully open and spreaders locked.

Set all feet on firm level surface. Do not place on unstable, loose, or slippery surfaces. Place ladder where access is not obstructed. Do not place in front of unlocked doors. Ladders are not intended to be used as scaffolds.

Climb only front side of ladder. Face ladder when climbing up or down. Maintain a firm grip. Use both hands in climbing.

Keep body centered between side rails. Do not overreach. Get down and move ladder as needed.

Do not climb, stand, or sit above second step from top. Do not climb, stand, or sit on spreader braces, ladder top, or utility shelf.

Do not straddle front and back. Do not climb from one ladder onto another.

Avoid pushing or pulling off to side of ladder. Do not "walk" or "shift" ladder while on it.

Extension & Straight Ladders

Set base of ladder on firm level surface.

Do not place on unstable, loose, or slippery surfaces. Do not place in front of unlocked doors. Ladders are not intended to be used as scaffolds.

Secure base section before raising ladder to upright position. Do not move ladder with fly section extended.

Extend fly section and engage rung locks. Make sure rope does not create a tripping hazard or interfere with activity near ladder. Tying bottom fly rung to adjacent base rung is recommended.

Extend and retract fly section from ground when no one is on ladder.

Position ladder against upper support surface. Make sure ladder does not lean to side. Ladder must make a 75 1/2° angle with the ground.

To establish if ladder is at proper angle – Determine the vertical distance between the top and bottom support points of the ladder. Divide the distance by 4. The result is the horizontal distance that the feet should be out from the bottom support point.

Face ladder when climbing up or down. Maintain a firm grip. Use both hands in climbing.

Keep body centered between side rails. Do not overreach. Get down and move ladder as needed.

fiberglass steps

6800-AA, 6600-AA, 6500-AA	4
6400, 6600, 6500	5

fiberglass extensions and straights

9200D, 6200/6200D, 5700/5700D	6
6100, 5600/5600D, 5300	7

fiberglass steps and extensions

6900, 6300, 5800 (STEPS)	8
6900, 6300, 5800 (EXTENSIONS).....	9

aluminum steps

3400, 2400, 1400	10
3500, 3600, 3700	11

aluminum extensions and straights

4200D, 3200D, 2200	12
4100, 3100D, 1200	13

hoop and telescopic

1304, JAWS	14
------------------	----

3-way and articulating

2700, 1700, 3316	15
------------------------	----

Warranty

Featherlite Industries Ltd. guarantees all ladders, under normal use and service to be free from defects of improper workmanship, construction or material for 1 year from date of purchase. JAWS JLT Telescopic ladders carry a lifetime warranty. If a ladder is found to be defective, Featherlite will, at its sole option, repair, or replace the ladder without charge for parts or labour. This warranty does not apply to any ladder which has been subjected to misuse, abuse, an accident, or has been altered.

Catalogue Descriptions

While care was taken to ensure that products within have been described accurately, Featherlite reserves the right to correct any errors. Furthermore products design and specifications are subject to change without notice and may not be reflected in this catalog. Please check with Featherlite for most current information.



fiberglass



SUPER-HEAVY DUTY FIBERGLASS STEP

Meets or exceeds CSA Grade 1AA, ANSI Type 1AA

- Extra heavy duty non-conductive "C" channel side rails in high visibility safety orange
- Super tough copolymer utility top for strength and durability
- Wide 3" slip-resistant serrated aluminum steps for safe climbing
- Inside spreader arms complete with "wrap-around" sleeves that strengthen spreader-to-rail connection and protect spreader arms during storage/loading/transit
- Each step is quad braced with Zinc coated steel diagonal braces providing incredible strength and stiffness
- Full rear "L" horizontal struts reinforced with Zinc coated steel diagonal braces offer maximum rigidity
- Extra large PVC rubber safety boots are heavy duty and provide increased rail protection and slip-resistance

MODEL	SIZE	OPEN HEIGHT	HIGHEST STANDING HEIGHT	BASE WIDTH	BASE DEPTH	APPROX. WEIGHT lbs
6804-AA	4'	45"	23"	20"	32"	19
6805-AA	5'	56"	34"	21"	37"	23
6806-AA	6'	68"	45"	23"	43"	28
6807-AA	7'	79"	56"	24"	50"	33
6808-AA	8'	90"	67"	26"	55"	38
6810-AA	10'	113"	90"	29"	62"	47
6812-AA	12'	135"	112"	32"	79"	64

SUPER-HEAVY DUTY FIBERGLASS 2-WAY STEP

Meets or exceeds CSA Grade 1AA, ANSI Type 1AA

- Extra heavy duty non-conductive "C" channel side rails in high visibility safety orange
- Aluminium top for strength and durability
- Wide 3" slip-resistant serrated aluminum steps for safe climbing
- Inside spreader arms complete with "wrap-around" sleeves that strengthen spreader-to-rail connection and protect spreader arms during storage/loading/transit
- Each step is quad braced with Zinc coated steel diagonal braces providing incredible strength and stiffness
- Extra large PVC rubber safety boots are heavy duty and provide increased rail protection and slip-resistance

MODEL	SIZE	OPEN HEIGHT	HIGHEST STANDING HEIGHT	BASE WIDTH	BASE DEPTH	APPROX. WEIGHT lbs
6603-AA	3'	34"	11"	19"	33"	22
6604-AA	4'	45"	23"	20"	41"	25
6605-AA	5'	57"	34"	22"	49"	30
6606-AA	6'	67"	45"	23"	57"	36
6607-AA	7'	79"	56"	25"	65"	43
6608-AA	8'	90"	67"	26"	73"	49
6610-AA	10'	112"	89"	29"	89"	62
6612-AA	12'	135"	112"	32"	106"	82



SUPER-HEAVY DUTY FIBERGLASS PLATFORM STEP

Meets or exceeds CSA Grade 1AA, ANSI Type 1AA

- Extra heavy duty non-conductive "C" channel side rails in high visibility safety orange
- Large safe and comfortable standing platform, 14" x 18"
- Wide 3" slip-resistant serrated aluminum steps for safe climbing
- Inside spreader arms complete with "wrap-around" sleeves that strengthen spreader-to-rail connection and protect spreader arms during storage/loading/transit
- Each step is quad braced with Zinc coated steel diagonal braces providing incredible strength and stiffness
- Rear horizontal struts reinforced with Zinc coated steel diagonal braces offer maximum rigidity
- Extra large PVC rubber safety boots are heavy duty and provide increased rail protection and slip-resistance

MODEL	SIZE	OPEN HEIGHT	HIGHEST STANDING HEIGHT	BASE WIDTH	BASE DEPTH	APPROX. WEIGHT lbs
6504-AA	4'	46"	24"	21"	30"	16
6505-AA	5'	57"	35"	23"	36"	21
6506-AA	6'	68"	45"	24"	42"	26
6507-AA	7'	79"	56"	25"	47"	31
6508-AA	8'	90"	67"	26"	53"	34
6510-AA	10'	113"	90"	29"	67"	42
6512-AA*	12'	135"	112"	31"	75"	57

*MEETS OR EXCEEDS CSA GRADE 1A, ANSI TYPE 1A, LOAD CAPACITY 375 LBS

EXTRA-HEAVY DUTY FIBERGLASS STEP

Meets or exceeds CSA Grade 1A, ANSI Type 1A

- Durable non-conductive "C" Channel side rails in high visibility safety yellow
- Super tough copolymer utility top for strength and durability
- Slip-resistant serrated aluminum steps for safe climbing
- Inside spreader arms complete with "wrap-around" brackets to strengthen spreader to rail connection and protect spreader arms during storage/loading/transport
- Reinforced with Zinc coated steel diagonal braces on the front of every other step and double bracing on bottom step for added strength and stiffness
- Full rear "L" horizontal struts reinforced with Zinc coated steel diagonal braces offer maximum rigidity
- Extra large PVC rubber safety boots are heavy duty and provide increased rail protection and slip-resistance

MODEL	SIZE	OPEN HEIGHT	HIGHEST STANDING HEIGHT	BASE WIDTH	BASE DEPTH	APPROX. WEIGHT lbs
6402*	2'	23"	11"	18"	17"	8
6403*	3'	34"	23"	19"	25"	13
6404	4'	45"	23"	20"	32"	17
6405	5'	56"	34"	21"	37"	21
6406	6'	68"	45"	23"	43"	24
6407	7'	79"	56"	24"	50"	27
6408	8'	90"	67"	26"	55"	32
6410	10'	113"	90"	29"	62"	40
6412	12'	135"	112"	32"	79"	57

*NON UTILITY TOP, STEP STOOL



6400 SERIES



EXTRA-HEAVY DUTY FIBERGLASS 2-WAY STEP

Meets or exceeds CSA Grade 1A, ANSI Type 1A

- Durable non-conductive "C" channel side rails in high visibility safety yellow
- Wide aluminum top with extra-thick brackets for strength and durability
- Wide 3" slip-resistant serrated aluminum steps for safe climbing
- Inside spreader arms complete with "wrap-around" sleeves that strengthen spreader-to-rail connection and protect spreader arms during storage/loading/transit
- Reinforced with Zinc coated steel diagonal braces on the front of every other step providing extra rigidity
- Extra large PVC rubber safety boots are heavy duty and provide rail protection and slip-resistance

MODEL	SIZE	OPEN HEIGHT	HIGHEST STANDING HEIGHT	BASE WIDTH	BASE DEPTH	APPROX. WEIGHT lbs
6603	3'	34"	11"	19"	33"	18
6604	4'	45"	23"	20"	41"	21
6605	5'	57"	34"	22"	49"	25
6606	6'	67"	45"	23"	57"	30
6607	7'	79"	56"	25"	65"	36
6608	8'	90"	67"	26"	73"	41
6610	10'	112"	89"	29"	89"	52
6612	12'	135"	112"	32"	106"	72
6614	14'	160"	138"	36"	122"	94
6616	16'	184"	162"	39"	141"	112



6600 SERIES



EXTRA-HEAVY DUTY FIBERGLASS PLATFORM STEP

Meets or exceeds CSA Grade 1A, ANSI Type 1A

- Extra heavy duty non-conductive "C" channel side rails in high visibility safety yellow
- Large safe and comfortable standing platform, 14" x 18"
- Wide 3" slip-resistant serrated aluminum steps for safe climbing
- Inside spreader arms complete with "wrap-around" sleeves that strengthen spreader-to-rail connection and protect spreader arms during storage/loading/transit
- Each step is reinforced with Zinc coated steel diagonal braces providing incredible strength and stiffness
- Rear horizontal struts reinforced with Zinc coated steel diagonal braces offer maximum rigidity
- Extra large PVC rubber safety boots are heavy duty and provide increased rail protection and slip-resistance

MODEL	SIZE	OPEN HEIGHT	HIGHEST STANDING HEIGHT	BASE WIDTH	BASE DEPTH	APPROX. WEIGHT lbs
6504	4'	45"	23"	21"	29"	15
6505	5'	57"	34"	23"	36"	21
6506	6'	68"	45"	25"	42"	25
6507	7'	79"	55"	26"	48"	30
6508	8'	90"	67"	27"	55"	33
6510	10'	113"	91"	30"	67"	41
6512	12'	135"	112"	33"	79"	56



6500 SERIES



fiberglass



SUPER-HEAVY DUTY FIBERGLASS EXTENSION

Meets or exceeds CSA Grade 1AA, ANSI Type 1AA

- Durable non-conductive fiberglass side rails in high visibility safety yellow
- Riveted rung to rail design maintains continuous strength of fibers and allows for easy repair
- Slip-resistant serrated "D" rungs for safe climbing and comfort
- Traditional raise from the rear pulley design
- Premium heavy duty rung locks for durability
- Large heavy duty pivot feet with slip-resistant rubber pads and ice pick

MODEL	SIZE	MAX. OPEN LENGTH	BASE SECTION		FLY SECTION		APPROX. WEIGHT lbs.
			OUTSIDE WIDTH	INSIDE WIDTH	OUTSIDE WIDTH	INSIDE WIDTH	
9216D	16'	13'	17 3/8"	15"	16 5/8"	14 1/4"	39
9220D	20'	17'	17 3/8"	15"	16 5/8"	14 1/4"	46
9224D	24'	21'	17 3/8"	15"	16 5/8"	14 1/4"	55
9228D	28'	25'	17 3/8"	15"	16 5/8"	14 1/4"	62
9232D	32'	28'	17 3/8"	15"	16 5/8"	14 1/4"	70
9236D*	36'	32'	17 3/4"	15 1/4"	16 7/8"	14 1/4"	80
9240D*	40'	35'	17 3/4"	15 1/4"	16 7/8"	14 1/4"	90

* 300LB LOAD RATING

SUPER-HEAVY DUTY FIBERGLASS EXTENSION

Meets or exceeds CSA Grade 1AA, ANSI Type 1AA

- Durable non-conductive fiberglass side rails in high visibility safety yellow
- Riveted rung to rail design maintains continuous strength of fibers and allows for easy repair
- Slip-resistant serrated rungs for safe climbing (available in round or "D" profile)
- Top cross over bar allows for ladder to be raised or lowered from front and provides torsional stiffness
- Premium heavy duty rung locks for durability
- Exclusive "1-Piece" foot assembly with spur wheel provides unequalled strength, durability and torsion resistance

MODEL	SIZE	MAX. OPEN LENGTH	BASE SECTION		FLY SECTION		APPROX. WEIGHT lbs.
			OUTSIDE WIDTH	INSIDE WIDTH	OUTSIDE WIDTH	INSIDE WIDTH	
6216	16'	13'	17 3/8"	15"	16 5/8"	14 1/4"	40
6220	20'	17'	17 3/8"	15"	16 5/8"	14 1/4"	47
6222	22'	19'	17 3/8"	15"	16 5/8"	14 1/4"	53
6224	24'	21'	17 3/8"	15"	16 5/8"	14 1/4"	57
6228	28'	25'	17 3/8"	15"	16 5/8"	14 1/4"	63
6232	32'	28'	17 3/8"	15"	16 5/8"	14 1/4"	71
6216D	16'	13'	17 3/8"	15"	16 5/8"	14 1/4"	41
6220D	20'	17'	17 3/8"	15"	16 5/8"	14 1/4"	48
6222D	22'	19'	17 3/8"	15"	16 5/8"	14 1/4"	54
6224D	24'	21'	17 3/8"	15"	16 5/8"	14 1/4"	58
6228D	28'	25'	17 3/8"	15"	16 5/8"	14 1/4"	64
6232D	32'	28'	17 3/8"	15"	16 5/8"	14 1/4"	72
6236D*	36'	32'	19"	15 1/2"	17 3/4"	14 1/4"	105
6240D*	40'	35'	19"	15 1/2"	17 3/4"	14 1/4"	114

* 300LB LOAD RATING, TRADITIONAL RAISE FROM REAR PULLEY SYSTEM, 4" RAIL, HEAVY DUTY DUAL PIVOT FEET



SUPER-HEAVY DUTY FIBERGLASS EXTENSION

Meets or exceeds CSA Grade 1AA, ANSI Type 1AA

- Durable non-conductive fiberglass side rails in high visibility safety yellow
- Riveted rung to rail design maintains continuous strength of fibers and allows for easy repair
- Slip-resistant serrated rungs for safe climbing (available in round or "D" profile)
- Top cross over bar allows for ladder to be raised or lowered from front and provides torsional stiffness
- Premium heavy duty rung locks for durability
- Large heavy duty pivot feet with slip-resistant rubber pads and ice pick

MODEL	SIZE	MAX. OPEN LENGTH	BASE SECTION		FLY SECTION		APPROX. WEIGHT lbs.
			OUTSIDE WIDTH	INSIDE WIDTH	OUTSIDE WIDTH	INSIDE WIDTH	
5716	16'	13'	17 3/8"	15"	16 1/2"	14 1/4"	39
5720	20'	17'	17 3/8"	15"	16 1/2"	14 1/4"	46
5724	24'	21'	17 3/8"	15"	16 1/2"	14 1/4"	55
5728	28'	25'	17 3/8"	15"	16 1/2"	14 1/4"	62
5732	32'	28'	17 3/8"	15"	16 1/2"	14 1/4"	70
5716D	16'	13'	17 3/8"	15"	16 1/2"	14 1/4"	40
5720D	20'	17'	17 3/8"	15"	16 1/2"	14 1/4"	47
5724D	24'	21'	17 3/8"	15"	16 1/2"	14 1/4"	56
5728D	28'	25'	17 3/8"	15"	16 1/2"	14 1/4"	63
5732D	32'	28'	17 3/8"	15"	16 1/2"	14 1/4"	71

SUPER-HEAVY DUTY STRAIGHT LADDERS

Meets or exceeds CSA Grade 1AA, ANSI Type 1AA

- Durable non-conductive fiberglass side rails in high visibility safety yellow
- Riveted rung to rail design maintains continuous strength of fibers and allows for easy repair
- Slip-resistant serrated rungs for safe climbing
- Black ABS, high impact non-marring end caps
- 6100 Series features the exclusive "1-Piece" foot assembly with spur wheel providing unequalled strength, durability and torsion resistance
- 5600 Series feature large heavy duty pivot feet with slip-resistant rubber pads and ice pick
- 5300 features Vinyl coated hoop ends, and 36" long rail sleeves that protect the ladder from rims and edges. Compliance with ANSI A14.5 /OSHA (CSA Not Applicable)

6100 SERIES

MODEL	SIZE	OUTSIDE WIDTH	INSIDE WIDTH	APPROX. WEIGHT lbs
6108	8'	17 3/8"	15"	19
6110	10'	17 3/8"	15"	22
6112	12'	17 3/8"	15"	26
6114	14'	17 3/8"	15"	31
6116	16'	17 3/8"	15"	34

5600/5600D SERIES

MODEL	SIZE	OUTSIDE WIDTH	INSIDE WIDTH	APPROX. WEIGHT lbs
5608	8'	17 3/8"	15"	18
5610	10'	17 3/8"	15"	21
5612	12'	17 3/8"	15"	24
5614	14'	17 3/8"	15"	28
5616	16'	17 3/8"	15"	31
5608D	8'	17 3/8"	15"	19
5610D	10'	17 3/8"	15"	22
5612D	12'	17 3/8"	15"	26
5614D	14'	17 3/8"	15"	31
5616D	16'	17 3/8"	15"	34

5300 SERIES

MODEL	SIZE	OUTSIDE WIDTH	INSIDE WIDTH	APPROX. WEIGHT lbs
5308	8'	12 1/8"	9 3/4"	21
5310	10'	12 1/8"	9 3/4"	25
5312	12'	12 1/8"	9 3/4"	27
5314	14'	12 1/8"	9 3/4"	32
5316†	16'	12 1/8"	9 3/4"	36

† 300LB LOAD RATING

9200D/6200/6200D/5700/5700D OPTIONS

Non-slip Strip for Mid Strand Work
Part # 99322



Levelok Leg Leveler
Part # 21145



Cable Hooks
Part # 99063



Rigid "V" Rung
Part # 99130



Pole Strap
Part # 99061



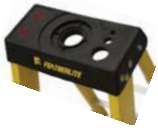
Rubber End Caps
Part # 99129



fiberglass



6900 SERIES



EXTRA-HEAVY DUTY FIBERGLASS STEP

Meets or exceeds CSA Grade 1A, ANSI Type 1A

- Durable non-conductive side rails in high visibility safety yellow
- Copolymer utility top for strength and durability
- Wide 3" slip-resistant serrated aluminum steps for safe climbing
- Inside spreader arms that are protected during storage/loading/transit
- Full rear "L" horizontal struts, Top and bottom struts reinforced with Zinc coated steel diagonal braces
- Reinforced with Zinc coated steel diagonal braces at top and bottom steps
- PVC rubber safety boots are heavy duty and provide rail protection and slip-resistance

MODEL	SIZE	OPEN HEIGHT	HIGHEST STANDING HEIGHT	BASE WIDTH	BASE DEPTH	APPROX. WEIGHT lbs
6903*	3'	34"	11"	17"	24"	12
6904	4'	45"	23"	19"	31"	14
6905	5'	56"	34"	20"	36"	17
6906	6'	68"	45"	21"	42"	20
6907	7'	79"	56"	22"	48"	23
6908	8'	90"	67"	24"	54"	26
6910	10'	113"	90"	26"	66"	37
6912	12'	135"	112"	29"	80"	48

*NON UTILITY TOP, STEP STOOL

HEAVY DUTY FIBERGLASS STEP

Meets or exceeds CSA Grade 1, ANSI Type 1

- Durable non-conductive "C" channel front rails in high visibility safety orange
- Super tough copolymer utility top for strength and durability
- Wide 3" slip-resistant serrated aluminum steps for safe climbing
- Rugged outside Zinc coated steel spreader arms
- Reinforced with Zinc coated steel diagonal braces at top and bottom steps
- Slip-resistant safety shoes



6300 SERIES



MODEL	SIZE	OPEN HEIGHT	HIGHEST STANDING HEIGHT	BASE WIDTH	BASE DEPTH	APPROX. WEIGHT lbs
6304	4'	46"	23"	20"	30"	15
6305	5'	57"	34"	21"	34"	18
6306	6'	68"	45"	23"	43"	20
6307	7'	79"	56"	24"	44"	23
6308	8'	90"	67"	26"	55"	26



5800 SERIES



MEDIUM DUTY FIBERGLASS STEP

Meets or exceeds CSA Grade 2, ANSI Type 2

- Durable non-conductive fiberglass side rails in high visibility safety red
- Molded copolymer utility top for holding tools and paint accessories
- Fold down utility tray
- Wide 3" slip-resistant serrated aluminum steps for safe climbing
- Rugged outside Zinc coated steel spreader arms
- Reinforced with Zinc coated steel diagonal braces at top and bottom steps
- Slip-resistant safety shoes

MODEL	SIZE	OPEN HEIGHT	HIGHEST STANDING HEIGHT	BASE WIDTH	BASE DEPTH	APPROX. WEIGHT lbs
5804	4'	45"	23"	18"	30"	12
5805	5'	57"	34"	20"	35"	15
5806	6'	68"	45"	21"	44"	18



EXTRA-HEAVY DUTY FIBERGLASS EXTENSION

Meets or exceeds CSA Grade 1A, ANSI Type 1A

- Durable non-conductive fiberglass side rails in high visibility safety yellow
- Rung through rail design
- Slip-resistant serrated "D" rungs for safe climbing and comfort
- Premium heavy duty rung locks for durability
- Black ABS, high impact non-marring end caps
- Large heavy duty pivot feet with slip-resistant rubber pads and ice pick

MODEL	SIZE	MAX. OPEN LENGTH	BASE SECTION		FLY SECTION		APPROX. WEIGHT lbs.
			OUTSIDE WIDTH	INSIDE WIDTH	OUTSIDE WIDTH	INSIDE WIDTH	
6916	16'	13'	17 1/8"	14 3/4"	16 1/8"	13 3/4"	34
6920	20'	17'	17 1/8"	14 3/4"	16 1/8"	13 3/4"	43
6924	24'	21'	17 1/8"	14 3/4"	16 1/8"	13 3/4"	51
6928	28'	25'	17 1/8"	14 3/4"	16 1/8"	13 3/4"	58
6932	32'	28'	17 1/8"	14 3/4"	16 1/8"	13 3/4"	65

HEAVY DUTY FIBERGLASS EXTENSION

Meets or exceeds CSA Grade 1, ANSI Type 1

- Durable non-conductive fiberglass side rails in high visibility safety orange
- Rung through rail design
- Slip-resistant serrated "D" rungs for safe climbing and comfort
- Premium heavy duty rung locks for durability
- Black ABS, high impact non-marring end caps
- Large heavy duty pivot feet with slip-resistant rubber pads and ice pick



MODEL	SIZE	MAX. OPEN LENGTH	BASE SECTION		FLY SECTION		APPROX. WEIGHT lbs.
			OUTSIDE WIDTH	INSIDE WIDTH	OUTSIDE WIDTH	INSIDE WIDTH	
6316	16'	13'	17 1/8"	14 3/4"	16 1/8"	13 3/4"	32
6320	20'	17'	17 1/8"	14 3/4"	16 1/8"	13 3/4"	38
6324	24'	21'	17 1/8"	14 3/4"	16 1/8"	13 3/4"	45



MEDIUM DUTY FIBERGLASS EXTENSION

Meets or exceeds CSA Grade 2, ANSI Type 2

- Durable non-conductive fiberglass side rails in high visibility safety red
- Rung through rail design
- Slip-resistant serrated "D" rungs for safe climbing
- Premium heavy duty rung locks for durability
- Black ABS, high impact non-marring end caps
- Large heavy duty pivot feet with slip-resistant rubber pads and ice pick

MODEL	SIZE	MAX. OPEN LENGTH	BASE SECTION		FLY SECTION		APPROX. WEIGHT lbs.
			OUTSIDE WIDTH	INSIDE WIDTH	OUTSIDE WIDTH	INSIDE WIDTH	
5816	16'	13'	17 1/8"	14 3/4"	16 1/8"	13 3/4"	28
5820	20'	17'	17 1/8"	14 3/4"	16 1/8"	13 3/4"	32
5824	24'	21'	17 1/8"	14 3/4"	16 1/8"	13 3/4"	38
5828	28'	25'	17 1/8"	14 3/4"	16 1/8"	13 3/4"	42

aluminum



EXTRA-HEAVY DUTY ALUMINUM STEP

Meets or exceeds CSA Grade 1A, ANSI Type 1A

- Super tough copolymer utility top for strength and durability
- Sizes 2'-10' feature wide 3" slip-resistant serrated aluminum steps for safe climbing
- Sizes 12'-16' feature extra wide 3 1/2" slip-resistant serrated aluminum steps for safe climbing
- Rugged outside Zinc coated steel spreader arms
- Heavy duty hinged utility tray for holding tools and paint accessories (10 x 10)
- Extra large PVC rubber safety boots are heavy duty and provide increased rail protection and slip-resistance

MODEL	SIZE	OPEN HEIGHT	HIGHEST STANDING HEIGHT	BASE WIDTH	BASE DEPTH	APPROX. WEIGHT lbs
3402*	2'	23"	11"	16"	18"	6
3403*	3'	34"	23"	17"	24"	8
3404	4'	46"	23"	18"	29"	12
3405	5'	57"	34"	20"	35"	15
3406	6'	68"	45"	21"	41"	17
3407	7'	79"	56"	22"	50"	20
3408	8'	91"	67"	24"	54"	23
3410	10'	114"	90"	26"	66"	28
3412†	12'	135"	114"	32"	78"	40
3414†	14'	158"	134"	35"	88"	51
3416†	16'	181"	160"	38"	102"	59

*STEP STOOL, NO TRAY, NON UTILITY TOP †EXTRA WIDE 3 1/2" STEPS AND RAILS *HEAVY DUTY SLIP-RESISTANT SAFETY SHOES

MEDIUM DUTY ALUMINUM STEP

Meets or exceeds CSA Grade 2, ANSI Type 2

- Durable yet light weight extruded side rails
- Molded copolymer utility top for holding tools and paint accessories
- Wide 3" slip-resistant serrated aluminum steps for safe climbing
- Outside pinch-proof spreader
- Slip-resistant safety shoes

MODEL	OPEN HEIGHT	MAX. STANDING HEIGHT	BASE WIDTH	BASE DEPTH	APPROX. WEIGHT lbs
2404	44"	23"	19"	30"	11
2405	57"	34"	21"	37"	13
2406	68"	46"	22"	43"	15
2407	79"	57"	24"	50"	18
2408	90"	69"	25"	56"	20
2410	114"	92"	28"	69"	26



LIGHT DUTY ALUMINUM STEP

Meets or exceeds CSA Grade 3, ANSI Type 3

- Strong yet light weight extruded side rails
- Molded copolymer utility top for holding tools and paint accessories
- Wide 3" slip-resistant serrated aluminum steps for safe climbing
- Outside pinch-proof spreader
- Slip-resistant safety shoes

MODEL	OPEN HEIGHT	MAX. STANDING HEIGHT	BASE WIDTH	BASE DEPTH	APPROX. WEIGHT lbs
1402*	23"	11"	16"	17"	5
1403	34"	11"	18"	24"	7
1404	45"	23"	19"	30"	8
1405	57"	34"	21"	37"	10
1406	68"	46"	22"	43"	12

*STEP STOOL

EXTRA-HEAVY DUTY ALUMINUM PLATFORM STEP

Meets or exceeds CSA Grade 1A, ANSI Type 1A

- Large comfortable slip-resistant platform, 14" x 18"
- Sizes 4'-10' feature wide 3" slip-resistant serrated aluminum steps for safe climbing
- Sizes 12'-16' feature extra wide 3 1/2" slip-resistant serrated aluminum steps for safe climbing
- Outside spreader arms
- Extra large PVC rubber safety boots are heavy duty and provide increased rail protection and slip-resistance

MODEL	SIZE	OPEN HEIGHT	HIGHEST STANDING HEIGHT	BASE WIDTH	BASE DEPTH	APPROX. WEIGHT lbs
3504	4'	46"	23"	21"	29"	13
3505	5'	56"	34"	22"	33"	17
3506	6'	68"	46"	23"	42"	20
3508	8'	90"	68"	26"	53"	25
3510	10'	112"	90"	29"	65"	31
3512*	12'	135"	115"	33"	78"	43
3514*	14'	157"	136"	36"	87"	52
3516*	16'	180"	158"	39"	102"	60

*EXTRA WIDE 3 1/2" STEPS AND RAILS *HEAVY DUTY SLIP-RESISTANT SAFETY SHOES



EXTRA-HEAVY DUTY 2-WAY STEP

Meets or exceeds CSA Grade 1A, ANSI Type 1A

- Aluminum top for strength and durability
- Wide 3" slip-resistant serrated aluminum steps for safe climbing
- Outside spreader arms
- Extra large PVC rubber safety boots are heavy duty and provide increased rail protection and slip-resistance

MODEL	SIZE	OPEN HEIGHT	HIGHEST STANDING HEIGHT	BASE WIDTH	BASE DEPTH	APPROX. WEIGHT lbs
3604	4'	45"	23"	19"	39"	14
3606	6'	68"	45"	21"	57"	20
3608	8'	90"	68"	24"	72"	28
3610	10'	112"	90"	26"	89"	36

*HEAVY DUTY SLIP-RESISTANT SAFETY SHOES



HEAVY DUTY ALUMINUM SAWHORSE

- Wide aluminum top for strength and durability
- Wide 3" slip-resistant serrated aluminum steps for safe climbing
- Outside spreader arms
- Rubber slip-resistant safety shoes
- Different sizes can be combined for planking applications

MODEL	SIZE	OPEN HEIGHT	BASE WIDTH	BASE DEPTH	APPROX. WEIGHT lbs
3702	2'	23"	32"	25"	10
3703	3'	35"	34"	32"	14
3704	4'	47"	35"	39"	19



aluminum



EXTRA-HEAVY DUTY ALUMINUM EXTENSION

Meets or exceeds CSA Grade 1A, ANSI Type 1A

- Rigid "Box Section" side rails, unequalled for strength and durability
- Side-mounted rope pulley and slide guide system keeps rope clear of climber's feet and allows easy raising and lowering of the fly section
- Yellow ABS, high impact non-marring end caps
- Premium heavy duty rung locks
- Slip-resistant serrated "D" rungs for safe climbing and comfort
- Heavy duty ribbed swivel feet with ice pick
- 16' through 28' models have 2 7/8" x 7/8" side rails
- 32' through 44' models have 3 1/4" x 1" side rails

MODEL	SIZE	MAX. OPEN LENGTH	BASE SECTION		FLY SECTION		APPROX. WEIGHT lbs.
			OUTSIDE WIDTH	INSIDE WIDTH	OUTSIDE WIDTH	INSIDE WIDTH	
4216D	16'	13'	17"	15 1/4"	14 1/2"	12 3/4"	32
4220D	20'	17'	17"	15 1/4"	14 1/2"	12 3/4"	37
4224D	24'	21'	17"	15 1/4"	14 1/2"	12 3/4"	44
4228D	28'	25'	17"	15 1/4"	14 1/2"	12 3/4"	52
4232D	32'	29'	18 1/2"	16 1/2"	15 7/8"	13 7/8"	64
4236D	36'	32'	18 1/2"	16 1/2"	15 7/8"	13 7/8"	70
4240D	40'	35'	18 1/2"	16 1/2"	15 7/8"	13 7/8"	82
4244D	44'	39'	18 1/2"	16 1/2"	15 7/8"	13 7/8"	90
4360*	60'	50'	21 3/4"	19"	16"	14"	122

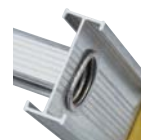
*THREE SECTION EXTENSION, MIDDLE SECTION OUTSIDE WIDTH: 18 1/2", INSIDE WIDTH: 16 1/2"; ROUND RUNG; NOT CSA APPROVED

EXTRA-HEAVY DUTY ALUMINUM EXTENSION

Meets or exceeds CSA Grade 1A, ANSI Type 1A

- Heavy duty "I" beam construction, 3 1/16" x 1 1/4" rails provide stability, torque resistance and high strength to weight ratio
- Heavy duty serrated "D" rungs prevent slipping for safe and sure climbing.
- Yellow ABS, high impact non-marring end caps
- Premium heavy duty rung locks
- Heavy duty ribbed swivel feet with ice picks

MODEL	SIZE	MAX. OPEN LENGTH	BASE SECTION		FLY SECTION		APPROX. WEIGHT lbs.
			OUTSIDE WIDTH	INSIDE WIDTH	OUTSIDE WIDTH	INSIDE WIDTH	
3216D	16'	13'	17 3/4"	15 1/4"	16 1/8"	13 5/8"	31
3220D	20'	17'	17 3/4"	15 1/4"	16 1/8"	13 5/8"	36
3224D	24'	21'	17 3/4"	15 1/4"	16 1/8"	13 5/8"	43
3228D	28'	25'	17 3/4"	15 1/4"	16 1/8"	13 5/8"	51
3232D	32'	29'	17 3/4"	15 1/4"	16 1/8"	13 5/8"	58
3236D	36'	32'	17 3/4"	15 1/4"	16 1/8"	13 5/8"	69
3240D	40'	35'	17 3/4"	15 1/4"	16 1/8"	13 5/8"	77



MEDIUM DUTY ALUMINUM EXTENSION

Meets or exceeds CSA Grade 2, ANSI Type 2

- Sturdy extruded "C" channel construction
- Slip-resistant serrated "D" rungs for safe climbing and comfort
- Red, high impact, non-marring end caps
- Premium heavy duty rung locks
- Non-slip swivel feet

MODEL	SIZE	MAX. OPEN LENGTH	BASE SECTION		FLY SECTION		APPROX. WEIGHT lbs.
			OUTSIDE WIDTH	INSIDE WIDTH	OUTSIDE WIDTH	INSIDE WIDTH	
2216	16'	13'	15 7/8"	14 1/8"	15 1/8"	13 5/8"	21
2220	20'	17'	15 7/8"	14 1/8"	15 1/8"	13 5/8"	27
2224	24'	21'	15 7/8"	14 1/8"	15 1/8"	13 5/8"	34
2228	28'	25'	15 7/8"	14 1/8"	15 1/8"	13 5/8"	40
2232	32'	29'	15 7/8"	14 1/8"	15 1/8"	13 5/8"	48
2236	36'	32'	17 1/2"	15 1/4"	16 1/4"	13 7/8"	61
2240	40'	36'	17 1/2"	15 1/4"	16 1/4"	13 7/8"	68





EXTRA-HEAVY DUTY ALUMINUM STRAIGHT LADDER

Meets or exceeds CSA Grade 1A, ANSI Type 1A

- Rigid "Box Section" side rails, unequalled for strength and durability
- Yellow ABS, high impact non-marring end caps
- Slip-resistant round serrated aluminum rungs
- Non-slip heavy duty ribbed swivel feet with ice picks

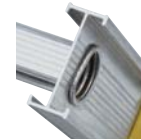
MODEL	SIZE	OUTSIDE WIDTH	INSIDE WIDTH	APPROX. WEIGHT lbs
4108	8'	14 5/8"	12 7/8"	13
4110	10'	14 5/8"	12 7/8"	15
4112	12'	14 5/8"	12 7/8"	19
4114	14'	14 5/8"	12 7/8"	22
4116	16'	14 5/8"	12 7/8"	25
4118	18'	14 5/8"	12 7/8"	28
4120	20'	14 5/8"	12 7/8"	31
4122	22'	15 3/4"	13 3/4"	41
4124	24'	15 3/4"	13 3/4"	44

EXTRA-HEAVY DUTY ALUMINUM STRAIGHT LADDER

Meets or exceeds CSA Grade 1A, ANSI Type 1A

- Heavy duty "I" beam construction, 3 1/16" x 1 1/4" rails provide stability, torque resistance and high strength to weight ratio
- Heavy duty serrated "D" rungs prevent slipping for safe and sure climbing
- Yellow ABS, high impact non-marring end caps
- Non-slip heavy duty ribbed swivel feet with ice picks

MODEL	SIZE	OUTSIDE WIDTH	INSIDE WIDTH	APPROX. WEIGHT lbs
3108D	8'	17 3/4"	15 1/4"	12
3110D	10'	17 3/4"	15 1/4"	14
3112D	12'	17 3/4"	15 1/4"	18
3114D	14'	17 3/4"	15 1/4"	21
3116D	16'	17 3/4"	15 1/4"	24
3118D	18'	17 3/4"	15 1/4"	27
3120D	20'	17 3/4"	15 1/4"	30



LIGHT DUTY ALUMINUM EXTENSION

Meets or exceeds CSA Grade 3, ANSI Type 3

- Strong extruded "C" channel construction
- Slip-resistant serrated "D" rungs for safe climbing and comfort
- Blue, high impact, non-marring end caps
- Non-slip swivel feet

MODEL	SIZE	MAX. OPEN LENGTH	BASE SECTION		FLY SECTION		APPROX. WEIGHT lbs.
			OUTSIDE WIDTH	INSIDE WIDTH	OUTSIDE WIDTH	INSIDE WIDTH	
1216	16'	13'	15 7/8"	14 1/8"	15 1/8"	13 1/4"	19
1220	20'	17'	15 7/8"	14 1/8"	15 1/8"	13 1/4"	24
1224	24'	21'	15 7/8"	14 1/8"	15 1/8"	13 1/4"	30

aluminum



LIGHT DUTY ALUMINUM PLATFORM STEP STOOL

Meets or exceeds CSA Grade 3, ANSI Type 3

- 1" tubular construction, makes this ladder light weight and allows for compact storage
- Handrail with comfort foam grip for added safety
- Fold down utility tray for tools and paint accessories
- Rubber slip-resistant safety feet
- Platform provides a large safe and comfortable standing area

MODEL	SIZE	OPEN HEIGHT	HEIGHT TO PLATFORM	BASE WIDTH	BASE DEPTH	APPROX. WEIGHT lbs
1304	4'	55"	22"	18"	27"	8

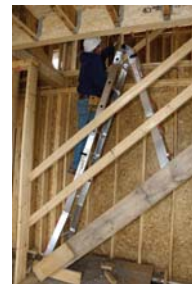
JAWS TELESCOPIC LADDER

Meets or exceeds CSA Grade 1AA, ANSI Type 1AA

- Compact and multifunctional, Replaces all conventional ladders
- Easily folds for storage or transport
- Flared ends with slip-resistant feet provide superior stability in any position
- Polymer rung locks are virtually indestructible
- Extra deep side rails make Jaws stiffer and stronger
- Mechanical interlocking tooth hinges for superior strength and 5 locking positions
- Extruded 6061-T6 marine alloy—for strength and corrosion resistance
- Welded outer rungs



MODEL	FOLDED HEIGHT	EXTENSION RANGE	WORKING HEIGHT	STEP LADDER RANGE	SCAFFOLD	APPROX. WEIGHT lbs
JLT 18	4'9"	9'0" to 15'0"	9'0" to 18'0"	4'6" to 7'6"	Up to 4'	36
JLT 22	5'9"	11'0" to 19'0"	11'0" to 22'0"	5'6" to 9'6"	Up to 5'	41
JLT 26	6'9"	13'0" to 23'0"	13'0" to 26'0"	6'6" to 11'6"	Up to 6'	50



Leg Leveler Part #JLL30



Wall Stand-off Part #WSO40



Step/Tray Part #JIS10 *JLT Series Only



Utility Tray Part #JUT20



HEAVY DUTY ALUMINUM 3-WAY

Meets or exceeds CSA Grade 1, ANSI Type 1

- Easily converts from a step ladder to extension to stairway ladder that locks securely and safely into all positions
- Durable extruded aluminum rails and slip-resistant serrated steps and rungs
- Heavy duty hardware and full rung support to ensure rigidity in all positions
- Fixed rubber safety shoes on front section, swivel feet on back section
- Black ABS, high impact non-marring end caps

MODEL	STEP SIZE	EXTENSION SIZE	MAX. EXTENSION OPEN LENGTH	APPROX. WEIGHT lbs
2706	6'	12'	9'	22
2707	7'	14'	11'	25
2708	8'	16'	13'	28

MEDIUM DUTY ALUMINUM 3-WAY

Meets or exceeds CSA Grade 2, ANSI Type 2

- Easily converts from a step ladder to extension to stairway ladder that locks securely and safely into all positions
- Durable extruded aluminum rails and slip-resistant serrated steps and rungs
- Fixed rubber safety shoes on front section, swivel feet on back section
- Red ABS, high impact non-marring end caps



MODEL	STEP SIZE	EXTENSION SIZE	MAX. EXTENSION OPEN LENGTH	APPROX. WEIGHT lbs
1707	7'	14'	11'	22
1708	8'	16'	13'	25



ALUMINUM ARTICULATING LADDER

Meets or exceeds CSA Grade 1, ANSI Type 1A

- Compact and multifunctional
- Sturdy "C" channel rail construction
- Serrated rungs prevent slipping for safe sure climbing
- Positive, visual hinge locking indication in any position
- Folds easily for storage and transport
- Stabilizer feet on each end that provide maximum stability

MODEL	STEP SIZE	EXTENSION SIZE	SCAFFOLD SIZE	APPROX. WEIGHT lbs
3316	8'	16'	4'	46



Canada's #1 Professional Brand

FEATHERLITE
INDUSTRIAL LADDERS



**LEADER
IN INDUSTRIAL
SUPPLIES**

6500, rue Zéphirin-Paquet, Parc industriel Armand Viau
Québec (Québec) Canada G2C 0M3
Téléphone : (418) 872-6018
Sans frais : (800) 463-5259

PRDISTRIBUTION.CA 1 800 463-5259